

# Discharge Measurement Summary

**Site name** Sodhouse8  
**Site number** 06  
**Operator(s)** VAllen  
**File name** Sodhouse8\_20230727-135250.ft  
**Comment**

<b>Start time</b>	7/27/2023 12:49 PM	<b>Sensor type</b>	Top Setting
<b>End time</b>	7/27/2023 1:48 PM	<b>Handheld serial number</b>	FT2H2219029
<b>Start location latitude</b>	43.250	<b>Probe serial number</b>	FT2P2219014
<b>Start location longitude</b>	-118.859	<b>Probe firmware</b>	1.30
<b>Calculations engine</b>	FlowTracker2	<b>Handheld software</b>	1.7

<b># Stations</b>	<b>Avg interval (s)</b>	<b>Total discharge (m<sup>3</sup>/s)</b>
28	40	0.0838

<b>Total width (m)</b>	<b>Total area (m<sup>2</sup>)</b>	<b>Wetted Perimeter (m)</b>
3.231	1.44325	3.694

<b>Mean SNR (dB)</b>	<b>Mean depth (m)</b>	<b>Mean velocity (m/s)</b>
33	0.447	0.0580

<b>Mean temp (°C)</b>	<b>Max depth (m)</b>	<b>Max velocity (m/s)</b>
24.479	0.664	0.1158

Discharge Uncertainty		
Category	ISO	IVE
Accuracy	1.0%	1.0%
Depth	0.1%	1.3%
Velocity	0.3%	2.7%
Width	0.1%	0.1%
Method	1.0%	
# Stations	1.8%	
Overall	2.3%	3.2%

<b>Discharge equation</b>	Mid Section
<b>Discharge uncertainty</b>	IVE
<b>Discharge reference</b>	Rated

Data Collection Settings	
<b>Salinity</b>	0.000 PSS-78
<b>Temperature</b>	-
<b>Sound speed</b>	-
<b>Mounting correction</b>	0.000 %

## Summary overview

No changes were made to this file  
Quality control warnings



# Discharge Measurement Summary

**Site name** Sodhouse8  
**Site number** 06  
**Operator(s)** VAllen  
**File name** Sodhouse8\_20230727-135250.ft  
**Comment**

## Station Warning Settings

**Station discharge OK**

Station discharge < 5.00%

**Station discharge caution**

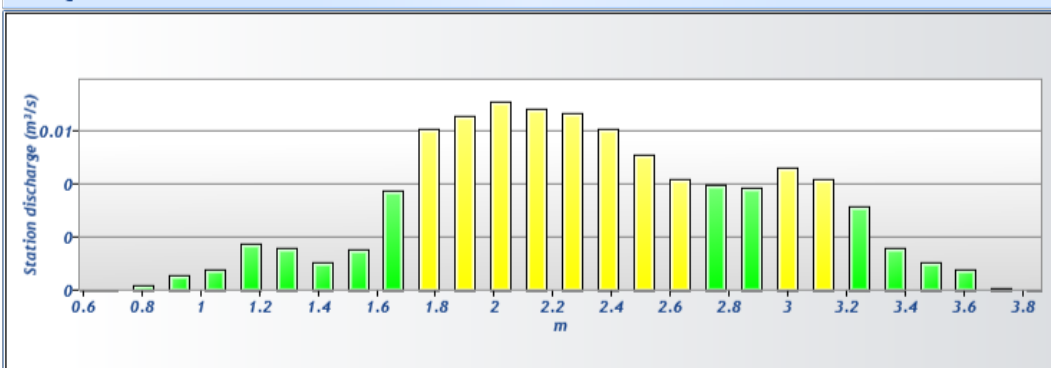
5.00% >= Station discharge < 10.00%

**Station discharge warning**

Station discharge >= 10.00%



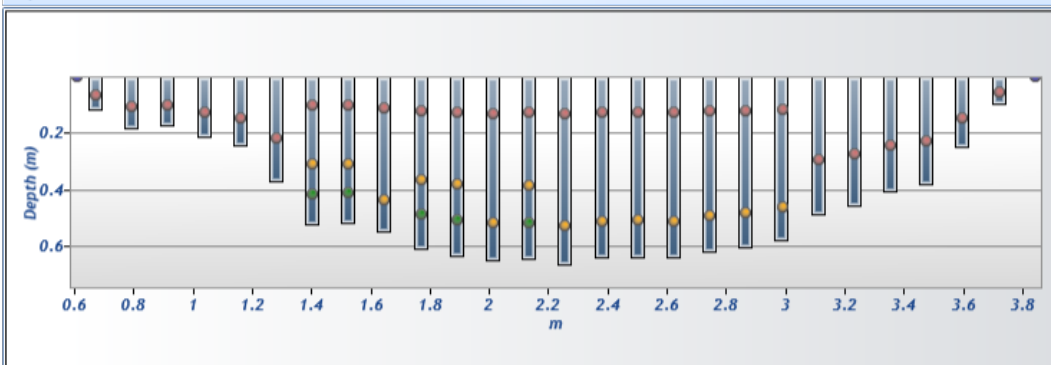
Discharge chart

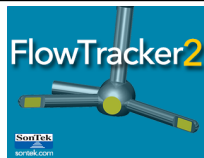


Velocity chart



Depth chart



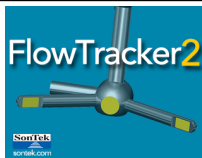


# Discharge Measurement Summary

**Site name** Sodhouse8  
**Site number** 06  
**Operator(s)** VAllen  
**File name** Sodhouse8\_20230727-135250.ft  
**Comment**

## Measurement results

St#	Time	Location (m)	Method	Depth (m)	%Depth	Measured Depth (m)	Samples	Velocity (m/s)	Correction	Mean Velocity (m/s)	Area (m <sup>2</sup> )	Flow (m <sup>3</sup> /s)	%Q	
0	12:49 PM	0.610	None	0.000	0.0000	0.000	0	0.0000	1.0000	0.0001	0.00000	0.0000	0.00	✓
1	12:49 PM	0.671	0.6	0.113	0.6000	0.068	80	0.0001	1.0000	0.0001	0.01031	0.0000	0.00	✓
2	12:51 PM	0.792	0.6	0.180	0.6000	0.108	80	0.0101	1.0000	0.0101	0.02193	0.0002	0.26	✓
3	12:52 PM	0.914	0.6	0.171	0.6000	0.102	80	0.0291	1.0000	0.0291	0.02081	0.0006	0.72	✓
4	12:53 PM	1.036	0.6	0.213	0.6000	0.128	80	0.0308	1.0000	0.0308	0.02601	0.0008	0.96	✓
5	12:55 PM	1.158	0.6	0.244	0.6000	0.146	80	0.0597	1.0000	0.0597	0.02973	0.0018	2.12	✓
6	12:56 PM	1.280	0.6	0.369	0.6000	0.221	80	0.0356	1.0000	0.0356	0.04497	0.0016	1.91	✓
7	12:58 PM	1.402	0.2/0.6/0.8	0.521	0.2000	0.104	80	0.0729	1.0000	0.0170	0.06355	0.0011	1.29	✓
7	12:58 PM	1.402	0.2/0.6/0.8	0.521	0.6000	0.313	80	-0.0023	1.0000	0.0170	0.06355	0.0011	1.29	✓
7	12:58 PM	1.402	0.2/0.6/0.8	0.521	0.8000	0.417	80	-0.0001	1.0000	0.0170	0.06355	0.0011	1.29	✓
8	1:02 PM	1.524	0.2/0.6/0.8	0.518	0.2000	0.104	80	0.0897	1.0000	0.0250	0.06317	0.0016	1.89	✓
8	1:02 PM	1.524	0.2/0.6/0.8	0.518	0.6000	0.311	80	0.0052	1.0000	0.0250	0.06317	0.0016	1.89	✓
8	1:02 PM	1.524	0.2/0.6/0.8	0.518	0.8000	0.415	80	0.0001	1.0000	0.0250	0.06317	0.0016	1.89	✓
9	1:05 PM	1.646	0.2/0.8	0.549	0.2000	0.110	80	0.0898	1.0000	0.0566	0.06689	0.0038	4.52	✓
9	1:05 PM	1.646	0.2/0.8	0.549	0.8000	0.439	80	0.0233	1.0000	0.0566	0.06689	0.0038	4.52	✓
10	1:08 PM	1.768	0.2/0.6/0.8	0.610	0.2000	0.122	80	0.1084	1.0000	0.0823	0.07432	0.0061	7.30	✓
10	1:08 PM	1.768	0.2/0.6/0.8	0.610	0.6000	0.366	80	0.0837	1.0000	0.0823	0.07432	0.0061	7.30	✓
10	1:08 PM	1.768	0.2/0.6/0.8	0.610	0.8000	0.488	80	0.0535	1.0000	0.0823	0.07432	0.0061	7.30	✓
11	1:11 PM	1.890	0.2/0.6/0.8	0.634	0.2000	0.127	80	0.1123	1.0000	0.0854	0.07730	0.0066	7.88	✓
11	1:11 PM	1.890	0.2/0.6/0.8	0.634	0.6000	0.380	80	0.0951	1.0000	0.0854	0.07730	0.0066	7.88	✓
11	1:11 PM	1.890	0.2/0.6/0.8	0.634	0.8000	0.507	80	0.0390	1.0000	0.0854	0.07730	0.0066	7.88	✓
12	1:15 PM	2.012	0.2/0.8	0.649	0.2000	0.130	80	0.1158	1.0000	0.0898	0.07915	0.0071	8.48	✓
12	1:15 PM	2.012	0.2/0.8	0.649	0.8000	0.519	80	0.0637	1.0000	0.0898	0.07915	0.0071	8.48	✓
13	1:17 PM	2.134	0.2/0.6/0.8	0.646	0.2000	0.129	80	0.1124	1.0000	0.0868	0.07878	0.0068	8.16	✓
13	1:17 PM	2.134	0.2/0.6/0.8	0.646	0.6000	0.388	80	0.0910	1.0000	0.0868	0.07878	0.0068	8.16	✓
13	1:17 PM	2.134	0.2/0.6/0.8	0.646	0.8000	0.517	80	0.0527	1.0000	0.0868	0.07878	0.0068	8.16	✓
14	1:22 PM	2.256	0.2/0.8	0.664	0.2000	0.133	80	0.1060	1.0000	0.0829	0.08101	0.0067	8.02	✓
14	1:22 PM	2.256	0.2/0.8	0.664	0.8000	0.532	80	0.0598	1.0000	0.0829	0.08101	0.0067	8.02	✓
15	1:25 PM	2.377	0.2/0.8	0.640	0.2000	0.128	80	0.0966	1.0000	0.0784	0.07804	0.0061	7.30	✓
15	1:25 PM	2.377	0.2/0.8	0.640	0.8000	0.512	80	0.0602	1.0000	0.0784	0.07804	0.0061	7.30	✓
16	1:27 PM	2.499	0.2/0.8	0.637	0.2000	0.127	80	0.0824	1.0000	0.0661	0.07767	0.0051	6.12	✓
16	1:27 PM	2.499	0.2/0.8	0.637	0.8000	0.510	80	0.0497	1.0000	0.0661	0.07767	0.0051	6.12	✓
17	1:29 PM	2.621	0.2/0.8	0.640	0.2000	0.128	80	0.0678	1.0000	0.0538	0.07804	0.0042	5.01	✓
17	1:29 PM	2.621	0.2/0.8	0.640	0.8000	0.512	80	0.0399	1.0000	0.0538	0.07804	0.0042	5.01	✓
18	1:32 PM	2.743	0.2/0.8	0.616	0.2000	0.123	80	0.0616	1.0000	0.0529	0.07507	0.0040	4.74	✓
18	1:32 PM	2.743	0.2/0.8	0.616	0.8000	0.493	80	0.0442	1.0000	0.0529	0.07507	0.0040	4.74	✓
19	1:34 PM	2.865	0.2/0.8	0.604	0.2000	0.121	80	0.0630	1.0000	0.0531	0.07358	0.0039	4.66	✓
19	1:34 PM	2.865	0.2/0.8	0.604	0.8000	0.483	80	0.0432	1.0000	0.0531	0.07358	0.0039	4.66	✓
20	1:37 PM	2.987	0.2/0.8	0.579	0.2000	0.116	80	0.0714	1.0000	0.0654	0.07061	0.0046	5.51	✓
20	1:37 PM	2.987	0.2/0.8	0.579	0.8000	0.463	80	0.0594	1.0000	0.0654	0.07061	0.0046	5.51	✓
21	1:39 PM	3.109	0.6	0.488	0.6000	0.293	80	0.0707	1.0000	0.0707	0.05946	0.0042	5.02	✓
22	1:40 PM	3.231	0.6	0.457	0.6000	0.274	80	0.0569	1.0000	0.0569	0.05574	0.0032	3.79	✓
23	1:42 PM	3.353	0.6	0.405	0.6000	0.243	80	0.0330	1.0000	0.0330	0.04942	0.0016	1.95	✓
24	1:43 PM	3.475	0.6	0.378	0.6000	0.227	80	0.0234	1.0000	0.0234	0.04608	0.0011	1.29	✓
25	1:45 PM	3.597	0.6	0.247	0.6000	0.148	80	0.0277	1.0000	0.0277	0.03010	0.0008	0.99	✓
26	1:46 PM	3.719	0.6	0.094	0.6000	0.057	80	0.0074	1.0000	0.0074	0.01152	0.0001	0.10	✓
27	1:48 PM	3.840	None	0.000	0.0000	0.000	0	0.0000	1.0000	0.0074	0.00000	0.0000	0.00	✓



# Discharge Measurement Summary

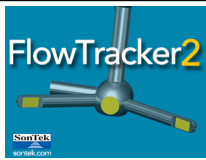
**Site name** Sodhouse8  
**Site number** 06  
**Operator(s)** VAllen  
**File name** Sodhouse8\_20230727-135250.ft  
**Comment**

## Quality Control Settings

**Maximum depth change** 50.00%  
**Maximum spacing change** 100.00%  
**SNR threshold** 10 dB  
**Standard error threshold** 0.0100 m/s  
**Spike threshold** 10.00%  
**Maximum velocity angle** 20.0 deg  
**Maximum tilt angle** 5.0 deg

## Quality control warnings

St#	Time	Location (m)	Method	Depth (m)	%Depth	Measured Depth (m)	Warnings
1	12:49 PM	0.671	0.6	0.113	0.6000	0.068	Boundary Interference, Beam SNRs Not Similar, SNR Threshold Variation
2	12:51 PM	0.792	0.6	0.180	0.6000	0.108	Boundary Interference
4	12:53 PM	1.036	0.6	0.213	0.6000	0.128	Large SNR Variation, SNR Threshold Variation
6	12:56 PM	1.280	0.6	0.369	0.6000	0.221	Boundary Interference
7	12:58 PM	1.402	0.2/0.6/0.8	0.521	0.2000	0.104	Boundary Interference, Beam SNRs Not Similar, SNR Threshold Variation
7	12:58 PM	1.402	0.2/0.6/0.8	0.521	0.6000	0.313	Boundary Interference, Beam SNRs Not Similar, SNR Threshold Variation
7	12:58 PM	1.402	0.2/0.6/0.8	0.521	0.8000	0.417	Boundary Interference, Beam SNRs Not Similar, SNR Threshold Variation
8	1:02 PM	1.524	0.2/0.6/0.8	0.518	0.2000	0.104	Large SNR Variation, SNR Threshold Variation
8	1:02 PM	1.524	0.2/0.6/0.8	0.518	0.6000	0.311	Large SNR Variation, SNR Threshold Variation
8	1:02 PM	1.524	0.2/0.6/0.8	0.518	0.8000	0.415	Large SNR Variation, SNR Threshold Variation
9	1:05 PM	1.646	0.2/0.8	0.549	0.2000	0.110	Large SNR Variation, SNR Threshold Variation, Velocity Angle > QC
9	1:05 PM	1.646	0.2/0.8	0.549	0.8000	0.439	Large SNR Variation, SNR Threshold Variation, Velocity Angle > QC
14	1:22 PM	2.256	0.2/0.8	0.664	0.2000	0.133	Large SNR Variation, Velocity Angle > QC
14	1:22 PM	2.256	0.2/0.8	0.664	0.8000	0.532	Large SNR Variation, Velocity Angle > QC
15	1:25 PM	2.377	0.2/0.8	0.640	0.2000	0.128	Velocity Angle > QC
15	1:25 PM	2.377	0.2/0.8	0.640	0.8000	0.512	Velocity Angle > QC
16	1:27 PM	2.499	0.2/0.8	0.637	0.2000	0.127	Velocity Angle > QC
16	1:27 PM	2.499	0.2/0.8	0.637	0.8000	0.510	Velocity Angle > QC
18	1:32 PM	2.743	0.2/0.8	0.616	0.2000	0.123	Boundary Interference, SNR Threshold Variation
18	1:32 PM	2.743	0.2/0.8	0.616	0.8000	0.493	Boundary Interference, SNR Threshold Variation
19	1:34 PM	2.865	0.2/0.8	0.604	0.2000	0.121	Boundary Interference
19	1:34 PM	2.865	0.2/0.8	0.604	0.8000	0.483	Boundary Interference
26	1:46 PM	3.719	0.6	0.094	0.6000	0.057	Large SNR Variation, SNR Threshold Variation



# Discharge Measurement Summary

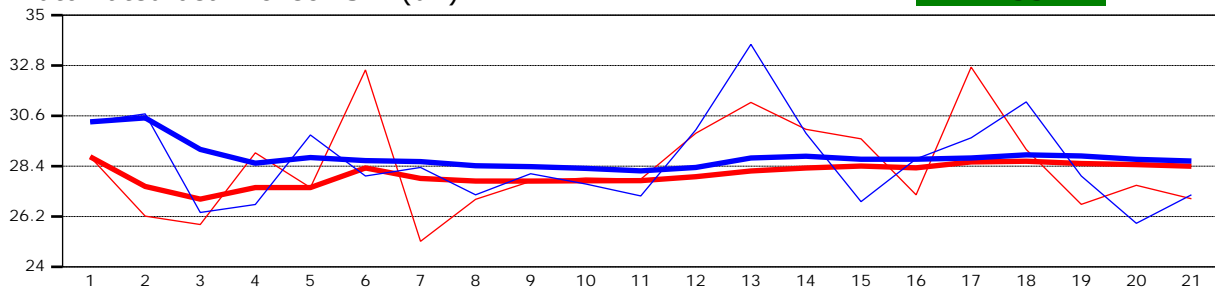
**Site name** Sodhouse8  
**Site number** 06  
**Operator(s)** VAllen  
**File name** Sodhouse8\_20230727-135250.ft  
**Comment**

<b>Beam 1</b>	
<b>Beam 2</b>	

Automated beam check Start time 7/27/2023 12:48:36 PM

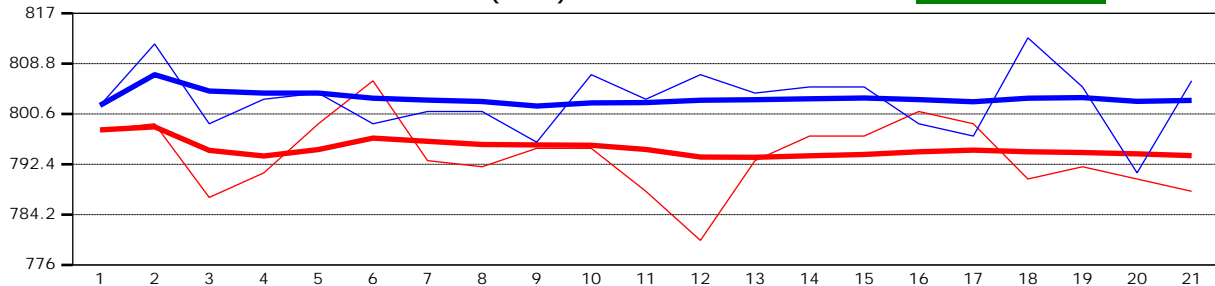
Automated beam check SNR(dB)

PASS



Automated beam check Noise level(cnts)

PASS



## Automated beam check Quality control warnings

No quality control warnings



# Discharge Measurement Summary

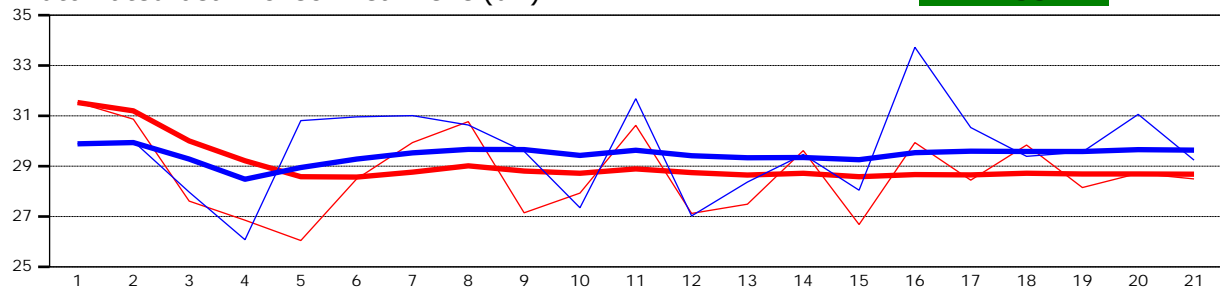
**Site name** Sodhouse8  
**Site number** 06  
**Operator(s)** VAllen  
**File name** Sodhouse8\_20230727-135250.ft  
**Comment**

<b>Beam 1</b>	
<b>Beam 2</b>	

Automated beam check Start time 7/27/2023 12:48:36 PM

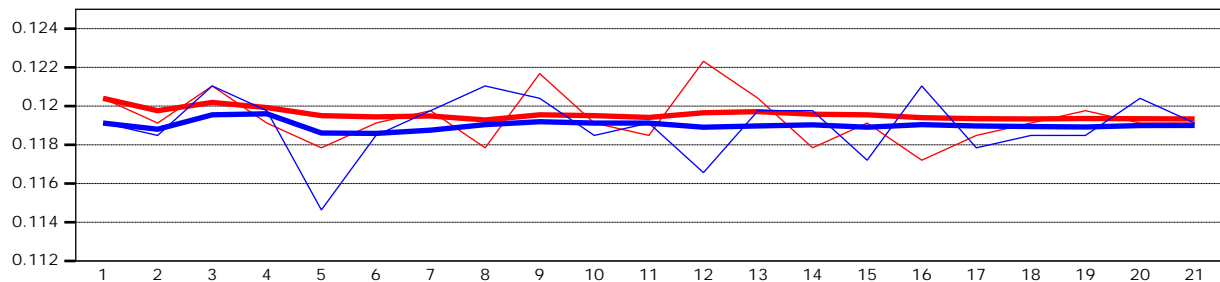
Automated beam check Peak level(dB)

PASS



Automated beam check Peak position(m)

PASS



## Automated beam check Quality control warnings

No quality control warnings